



**CITY COUNCIL EXECUTIVE COMMITTEE MEETING  
CITY COUNCIL CHAMBERS, THIRD FLOOR, CITY HALL,  
#1 CITY HALL PLACE, PUEBLO, COLORADO 81003.**

**MONDAY, MAY 18, 2026  
5:30 PM**

***Individuals Requiring Special Accommodations Should Notify the City's ADA Coordinator at (719) 553-2295 by Noon on the Friday Preceding the Meeting.***

***Executive Committee meetings are special meetings of the City Council and are informal Council meetings for the purpose of receiving information and discussion among Council Members; no official action is taken at such meetings. The public is invited to attend, but public comment is generally not received unless otherwise noted.***

## **Agenda**

### **CALL TO ORDER**

### **PRESENTATIONS**

- |  |         |
|--|---------|
| <b>A. CITY UPDATES</b>                                     | 5:30 PM |
| Brian McCain, Chief of Staff<br>5 minute presentation      |         |
| <b>B. LOBBYIST WRAP UP REPORT</b>                          | 5:35 PM |
| Gil Romero - Capitol Success<br>30 minute presentation     |         |
| <b>C. FOUNTAIN CREEK WATERSHED DISTRICT UPDATE</b>         | 6:05 PM |
| Alli Schuch - Executive Director<br>15 minute presentation |         |
| <b>D. BUDGET ACCOUNTING &amp; TERMINOLOGY</b>              | 6:30 PM |
| Danny Nunn, Director of Finance<br>20 minute presentation  |         |

### **EXECUTIVE SESSION**

- |   |         |
|---|---------|
| <b>A. FOR THE PURPOSE OF DETERMINING POSITIONS RELATIVE TO MATTERS THAT MAY BE SUBJECT TO NEGOTIATIONS, DEVELOPING STRATEGY FOR NEGOTIATIONS, AND/OR INSTRUCTING NEGOTIATORS, UNDER C.R.S. SECTION 24 6 402(4)(E)(I) AND TO DISCUSS THE PURCHASE, ACQUISITION, LEASE, TRANSFER, OR SALE OF ANY REAL, PERSONAL, OR OTHER PROPERTY INTEREST PURSUANT TO C.R.S. §24-6-402(4)(A) AND MORE SPECIFICALLY DESCRIBED AS: POSSIBLE SALE OF A LOT WITHIN THE AIRPORT INDUSTRIAL PARK.</b> | 7:00 PM |
|---|---------|

Andrew Hayes, Public Works Director  
30 minute presentation

**ADJOURNMENT**



**FOUNTAIN CREEK**  
WATERSHED DISTRICT

# FCWD Update for Pueblo City Council

**5.18.2026**

Alli Schuch  
Executive Director



**FOUNTAIN CREEK**  
WATERSHED DISTRICT

# Celebrating 17+ Years of District Impact, Improvements, and Inspiration

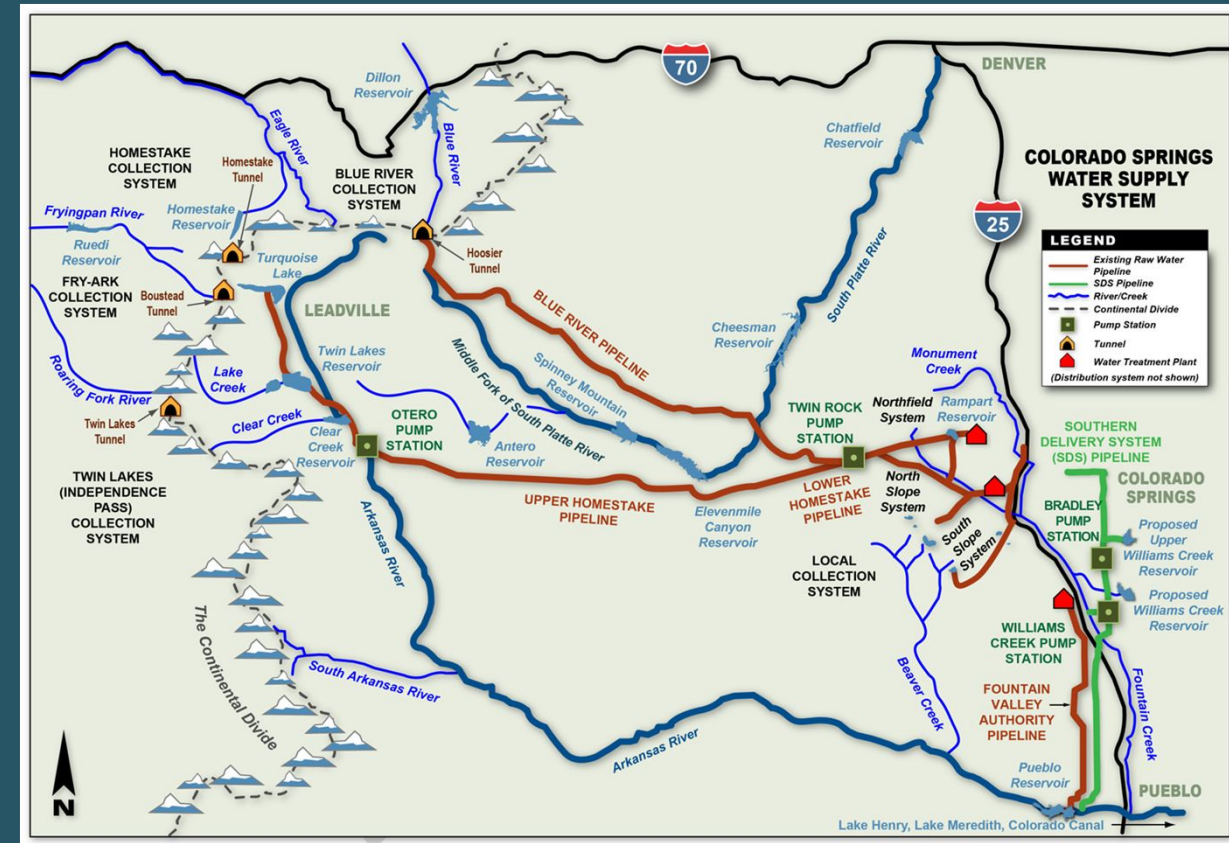




# FCWD History

## FOUNTAIN CREEK WATERSHED DISTRICT

- Lawsuits, water quality issues, growth, erratic watershed
- SDS Permit Requirements - \$50M for monetary mitigation of impacts to Fountain Creek from return flows.
- FC Vision Taskforce - 2+ years of community conversations
- Regional shared issues need regional shared solutions
- Established a collaborative District with representatives from all 9 jurisdictions





**FOUNTAIN CREEK  
WATERSHED DISTRICT**

# FCWD History

**SB09-141 under Title 32 of the CRS April 2009**

**Authorized to manage, administer, and fund the capital improvements necessary in the Fountain Creek Watershed to:**

- Mitigate flooding, erosion, and sedimentation
- Address water quality issues
- Improve drainage
- Protect open space
- Develop public recreational opportunities





**FOUNTAIN CREEK  
WATERSHED DISTRICT**

**Staff**

- **Alli Schuch, Executive Director**
- **Mary Wilson, Watershed Outreach Coordinator**
- **Jordan Witteveen, Administrative Assistant**
- **Susan Finzel, Pueblo Outreach Coordinator**
- **Steve Rodriguez, Operations Manager**
- **Lucy Rogers, Outreach Assistant and Yearlong Fellow**

# Our Team

## **Board of Directors – all Jurisdictions Represented**

- **Bill Wysong, El Paso County, Chair**
- **Jeff Chostner, Pueblo County Landowner, Vice Chair**
- **Tamara Estes, City of Fountain, Secretary**
- **Terry Hart, CAG Representative, Treasurer**
- **Jessica Mills, Lower Ark. Water Conservancy District**
- **Nancy Henjum, City of Colorado Springs**
- **Miles Lucero, Pueblo County**
- **Diane Danti, City of Pueblo**
- **Jay Kita, Small Municipalities**

## **■ Monetary Mitigation Fund Advisory Committee**

## **■ Technical Advisory Committee**

## **■ Citizen Advisory Group**



**FOUNTAIN CREEK**  
WATERSHED DISTRICT

# Our Impact

- **25+ Watershed Studies, Plans, and Master Plans**
- **12 large scale creek restoration projects**
- **Regional collaborator and convener**
- **Robust outreach/education programs**



**FOUNTAIN CREEK**  
WATERSHED DISTRICT

# Outreach and People Inspiring Watershed Warriors



- Installed 5 residential raingardens
- Annual rain barrel sale

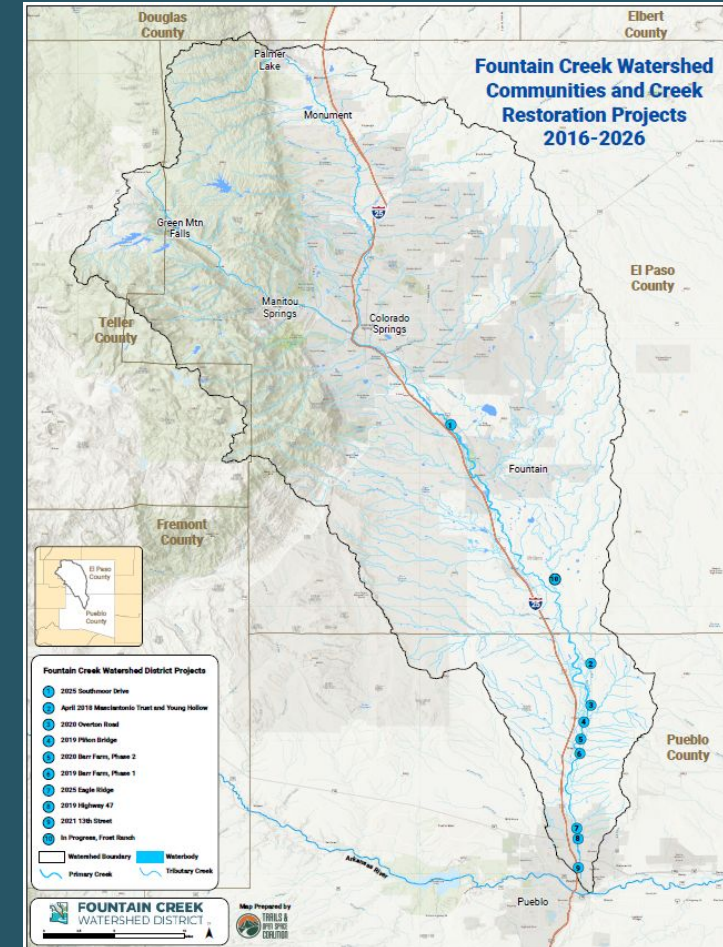




# Restoration Work

## FOUNTAIN CREEK WATERSHED DISTRICT

- MMF Projects
  - \$40+M to date
- Master Plans
- Effectiveness and Lessons Learned Studies
- Jackson Creek Scoping Study





# District Future

## FOUNTAIN CREEK WATERSHED DISTRICT

- Spend down MMF \$
- Scaling maintenance
- Long-term vision
- Member govt. support
- Sustainable funding
  - In Lieu Fee program





**FOUNTAIN CREEK**  
WATERSHED DISTRICT

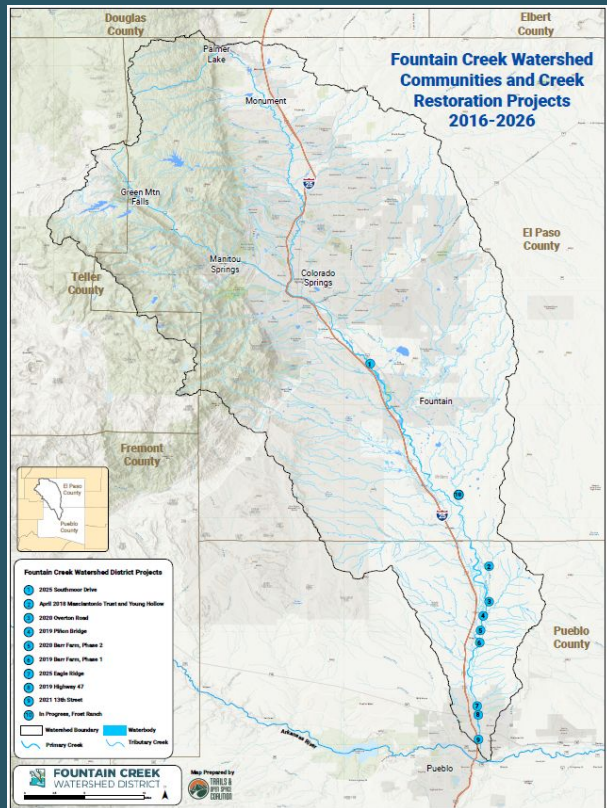
# In-Lieu Fee Program





## FOUNTAIN CREEK WATERSHED DISTRICT

# MMF footprint and 1041 Permit Conditions



only for one or more new projects in the Fountain Creek watershed between Colorado Springs and the Arkansas River confluence in Pueblo that:

- Create a “*significant and not merely incidental benefit*” to Fountain Creek within Pueblo County, and
- Are for *improvement of water quality, flood control, or erosion and sedimentation prevention.*



**FOUNTAIN CREEK  
WATERSHED DISTRICT**

# Pueblo at 13th Street

- 2,900 feet
- Constructed 2018-2021
- \$2.6M
- Multiple highly eroding banks
- Threatening levee and railroad
- Goals
  - Sediment reduction
  - Infrastructure protection
  - Bank protection
  - Establish native vegetation





# Overton Road - Pueblo County

## FOUNTAIN CREEK WATERSHED DISTRICT

- 1,700 feet
- Constructed 2019-2020
- \$1.0M
- Overton Road washed out
- Floodplain constriction, bridge abutments left in place
- Goals
  - Stop lateral migration and erosion
  - Armor banks
  - Remove bridge abutments and road embankments
  - Restore native riparian vegetation

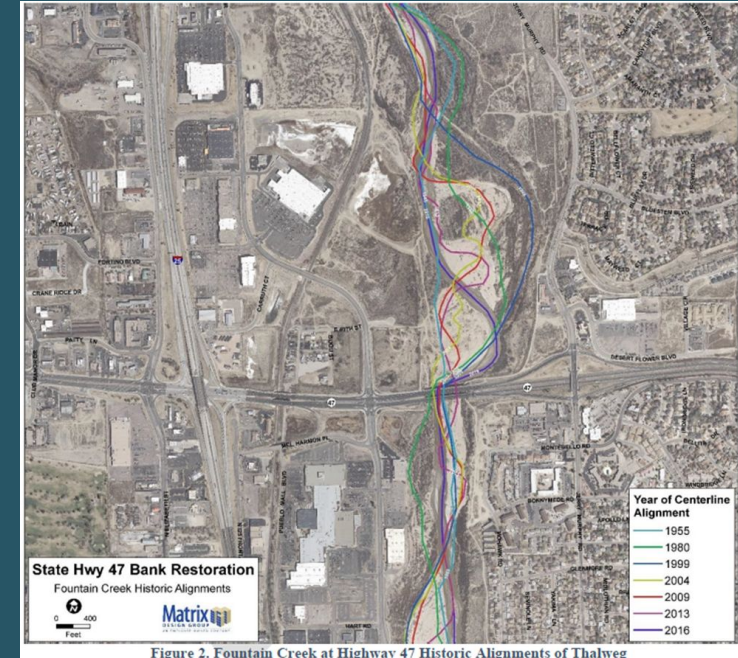




# Eagleridge - Pueblo

## FOUNTAIN CREEK WATERSHED DISTRICT

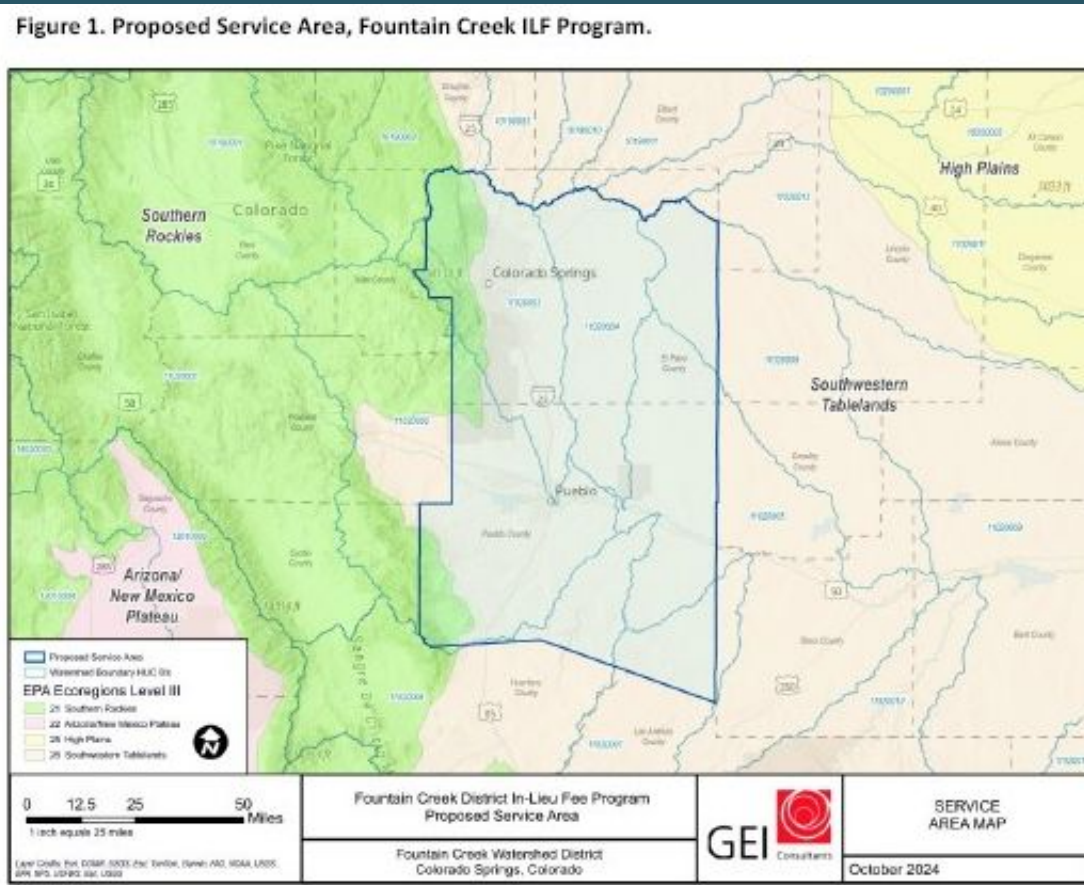
- 5,000 feet
- Constructed 2025
- \$4.4M
- Goals
  - Reduce erosion
  - Tie into upper end of Hwy 47 project





# FOUNTAIN CREEK WATERSHED DISTRICT

# ILF Service Area





**FOUNTAIN CREEK**  
WATERSHED DISTRICT

# What is Mitigation?

Unavoidable impacts to regulated resources  
(wetlands, streams, and species)

Regulations: **Clean Water Act, Endangered  
Species Act, Colorado Regulation 87**

Common Agencies: USACE, USFWS, CDPHE

Does not replace existing jurisdictional regulations



## Impacts

- Transportation
- Development
- Water Infrastructure

## Regulations

- Clean Water Act
- Endangered Species Act
- CDPHE Regulation 87
- Local regs

## Requirements

- Avoid
- Minimize
- Mitigate\*

**\*Mitigation:** Offsets for unavoidable impacts to regulated natural resources



**FOUNTAIN CREEK**  
WATERSHED DISTRICT

# Types of Mitigation

## PRM MITIGATION

Individual project mitigation at one location

Restoration in parallel to impacts

Permittee develops; perpetual liability

How things have historically been done

## MITIGATION BANK

Multiple project mitigation at one location

Restoration pre-impacts

Third-party “entrepreneur” develops; severance of liability

Relatively new (Last ~5 years)

## IN-LIEU FEE PROGRAM (ILF)

Multiple project mitigation at multiple locations

Restoration post-impacts

ILF sponsor funds restoration out of collected fees; severance of liability

New!



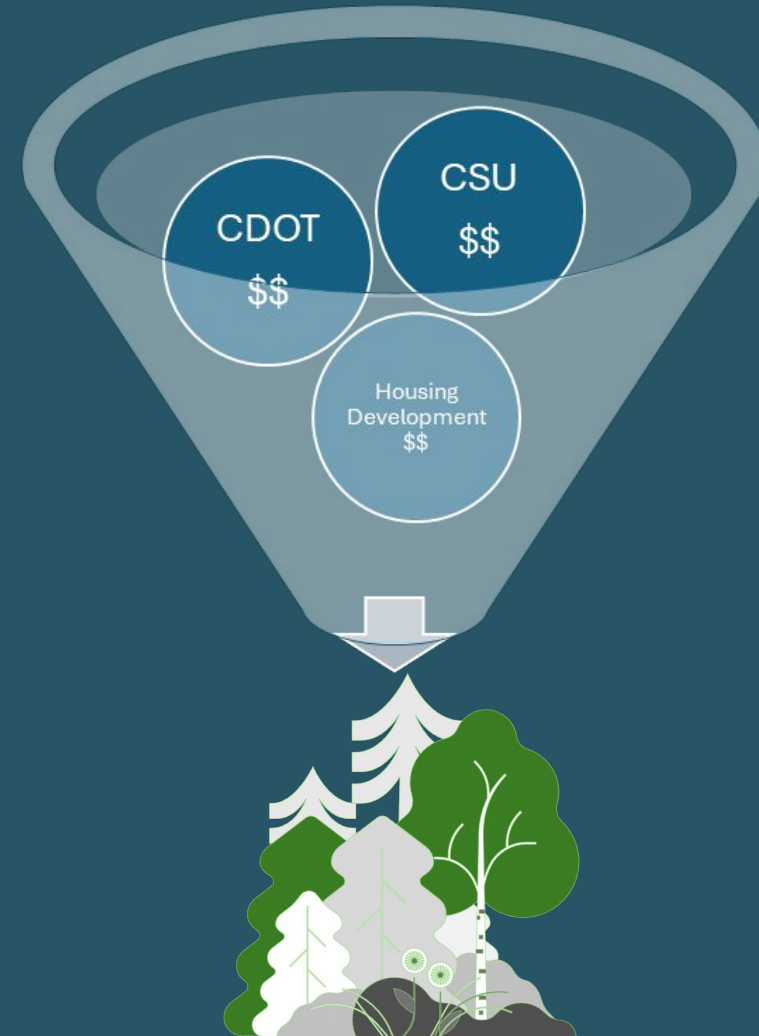
# ILF Program Participation

**FOUNTAIN CREEK**  
WATERSHED DISTRICT

Program participation is voluntary

PRM can be costly and time consuming...ILF offers a streamlined solution to federal and state environmental permits

Simply pay to mitigate and watch your dollars restore and build watershed resiliency





**FOUNTAIN CREEK**  
WATERSHED DISTRICT

# How it Works - Credits & Funding

## Credits

- Providing mitigation credits for unavoidable impacts to wetlands, streams, and species
- Impact Mitigation Credit Ratios:
  - 1:1.25 for wetlands and streams
  - 1:3 for species

## Funding

- ILF funds restoration out of collected fees paid to the FCWD by permittees  
**Not** assessed fees, taxes, grants, etc.



**FOUNTAIN CREEK**  
WATERSHED DISTRICT

# Working Together for a healthier watershed.

- FCWD exists to support collaborative, watershed-scale solutions
- We are committed to strong partnerships with the City of Pueblo and regional stakeholders
- Our work helps protect infrastructure, water quality, public safety, recreation, and long-term community resilience
- We value ongoing communication and feedback from Council
- We welcome opportunities to align projects and priorities with City needs

*Healthy watersheds require long-term partnerships.*



**FOUNTAIN CREEK**  
WATERSHED DISTRICT

**Thank you for your continued partnership  
and support of the Fountain Creek  
Watershed District.**

## **We're Here as a Resource**

- Project coordination
- Watershed planning
- Grant partnerships
- Technical collaboration
- Community outreach & education
- Restoration and maintenance support

**Alli Schuch**  
FCWD Executive Director  
Email: [fountainckdist@gmail.com](mailto:fountainckdist@gmail.com)